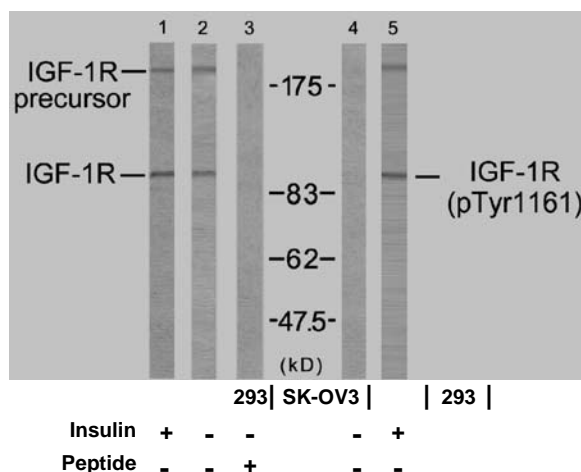


Rabbit anti IGF-1R (pTyr1161)

- Catalog Number:** pAP11087
Amount: 100µl (for 10 Western Blotting)
Form of Antibody: Rabbit IgG in phosphate buffered saline (without Mg²⁺ and Ca²⁺), pH 7.4, 150mM NaCl, 0.02% sodium azide and 50% glycerol.
Storage/Stability: Store at -20°C/1 year
Immunogen: The antiserum was produced against synthesized phosphopeptide derived from human IGF-1R around the phosphorylation site of tyrosine 1161 (D-I-Y^P-E-T).
Purification: The antibody was affinity-purified from rabbit antiserum by affinity-chromatography using epitope-specific phosphopeptide. The antibody against non-phosphopeptide was removed by chromatography using non-phosphopeptide corresponding to the phosphorylation site.
Specificity/Sensitivity: IGF-1R (phospho-Tyr1161) antibody detects endogenous levels of IGF-1R only when phosphorylated at tyrosine1161.
Reactivity: Human, Mouse, Rat
Applications: WB: 1:1000
Swiss-Prot No. : P08069
References: Li S, et al. (1994) J Biol Chem; 269(51).
Hernandez-Sanchez C, et al. (1995) J Biol Chem.



Western blot analysis using IGF-1R (Ab-1161) antibody (AP21080, Line 1, 2 and 3) and IGF-1R (phospho-Tyr1161) antibody (pAP11087, Line 4 and 5).

For Research Use Only

Contact & Ordering Information: Angio-Proteomie, 11 Park Drive, Suite 12, Boston, MA 02215, USA. Fax: (480) 247-4337, angioproteomie@gmail.com